

HX-EP Series Installation Guide

Wiring and Circuit Diagram

Digital Output / 2 Channel

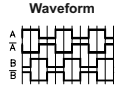
Connector
 A +Vin
 B COMMON
 C CHANNEL A
 D CHANNEL B
 E N.C.
 F N.C.



Model/Option	+ V in	OUTPUT STAGE
Standard EP, EPM, HX-EP	+5 VDC ±5%	Figure 1
H1	8 to 28 VDC	Figure 3

Digital Output / Line Drive

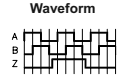
Connector
 A +Vin
 B COMMON
 C CHANNEL A
 D CHANNEL A
 E CHANNEL B
 F CHANNEL B



Model/Option	+ V in	OUTPUT STAGE
H2	+5 VDC ±5%	Figure 2
H3	8 to 28 VDC	Figure 3
H4	8 to 28 VDC	Figure 4
H5	+5 VDC ±5%	Figure 5

Digital Output / 2 Channel with Index

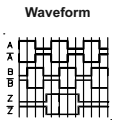
Connector
 A +Vin
 B COMMON
 C CHANNEL A
 D CHANNEL B
 E CHANNEL Z
 F N.C.



Model/Option	+ V in	OUTPUT STAGE
"I" option	+5 VDC ±5%	Figure 1
"H1I" option	+8 to +28 VDC	Figure 3

Digital Output / Line Drive with Index

Connector
 A +Vin
 B COMMON
 C CHANNEL A
 D CHANNEL A
 E CHANNEL B
 F CHANNEL B
 G CHANNEL Z
 H CHANNEL Z



Model/Option	+ V in	OUTPUT STAGE
H2I	+5 VDC ±5%	Figure 2
H3I	8 to 28 VDC	Figure 3
H4I	8 to 28 VDC	Figure 4
H5I	+5 VDC ±5%	Figure 5

Output Stages

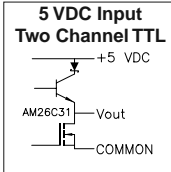


Figure 1

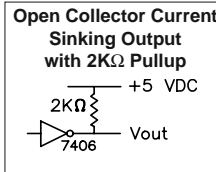


Figure 2

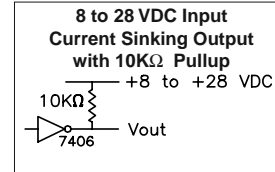


Figure 3

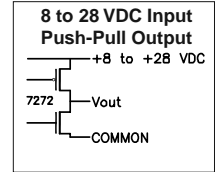


Figure 4

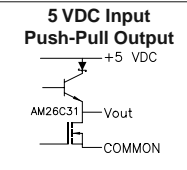
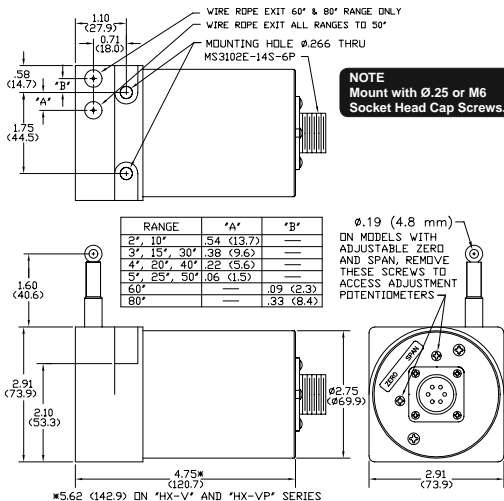


Figure 5

Dimensional Information



Alternate Wire Rope Exit

Note: Dimensions in brackets are millimeters.

RANGE	'A'	'B'	'C'
2', 10"	1.12 (28.4)	1.79 (45.5)	1.21 (30.7)
3', 15", 30"	0.96 (24.4)	1.95 (49.5)	1.37 (34.8)
4', 20", 40"	0.80 (20.3)	2.11 (53.6)	1.53 (38.9)
5', 25", 50"	0.64 (16.3)	2.27 (57.7)	1.69 (42.9)
60°	0.49 (12.4)	2.42 (61.5)	1.84 (46.7)
80°	0.25 (6.4)	2.66 (67.6)	2.08 (52.8)

Alternate Wire Rope Exit

