

LX-EP Series Installation Guide

Installation Information

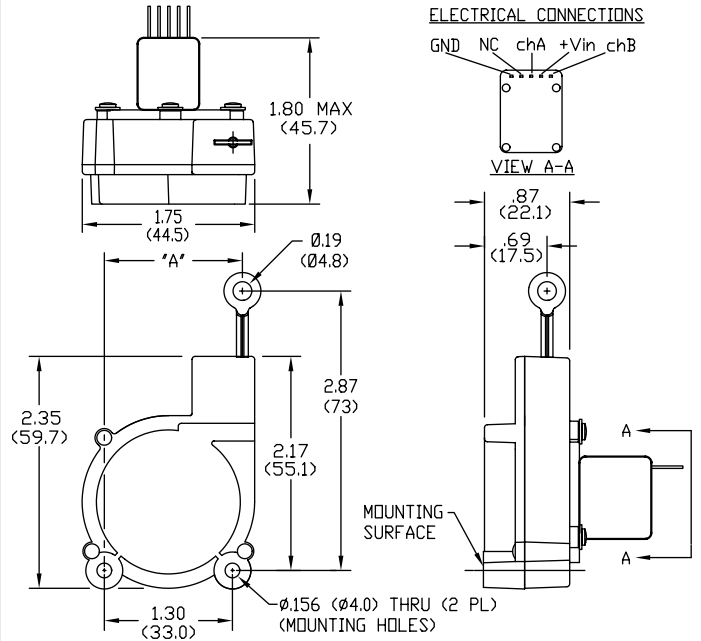
1. Unit mounts on surface shown in Figure 1.
2. To maximize cable life, align transducer with moving element so that cable exits unit within 2° of vertical (with unit oriented as shown in Figure 1).
3. Use Table 1 to determine cable exit location relative to transducer mounting holes.
4. Mount unit with two #6 or smaller machine screws or two M3.5 or smaller metric machine screws.

Note

- a) Place a flat washer under the head of each screw.
- b) Torque 6-32 screws to **5 lb-in** maximum.
- c) Torque M3.5 screws to **0.56 N-m** maximum.

Specifications

Excitation Voltage..... 5.00 VDC \pm 0.25 VDC
 Excitation Current..... 30 mA max.
 Output 2 channel square wave in quadrature
 25 mA current sinking with internal 5.4K Ω
 pullup resistors (see schematic below)
 Connector Pins..... .025"x.025" on 0.100" centers
 Linearity..... \pm 0.10% of Full Scale
 Operating Temperature -25°C to +60°C



Dimensions in brackets are millimeters *Figure 1*

OUTPUT STAGE

WAVEFORM

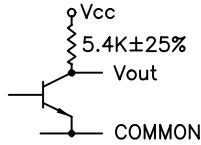


Table 1

Range	Dim "A"	
	(inch)	(mm)
10"	1.01	25.7
15", 30"	1.14	29.0
20", 40"	1.30	33.0
25", 50"	1.46	37.1

UniMeasure

4175 SW Research Way, Corvallis, Oregon, 97333

•Tel: 541-757-3158 •Fax: 541-757-0858