

# HX Series

HEAVY DUTY, ENVIRONMENTALLY SEALED



## Featuring:

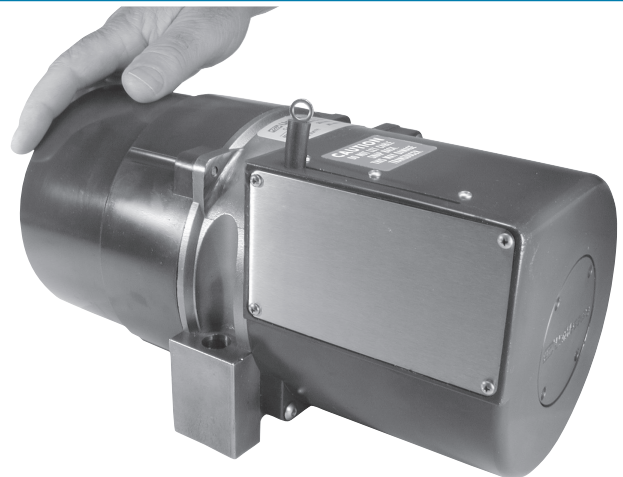
- Voltage, Current & Digital Outputs
- IP-65 (NEMA 4), IP-68 (NEMA 6)
- Rugged Construction
- Optional Non-Corrosive Housing
- Analog or Digital Output
- Position and/or Velocity Signal
- Integral Dust Wiper
- 2000" (50 m) Max. Range
- 30 Measurement Ranges



**HX Series Ranges to 80" (2 m)**



**HX Series Ranges to 800" (20 m)**



**HX Series Ranges to 2000" (50 m)**

## Adjustable Zero and Span



**Connector with Mating Connector**



**Bulkhead Fitting & Electrical Cable IP-68 (NEMA 6)**



**Connector w/ Mating Connector & Electrical Cable**